

EEH Neuroscience Grand Rounds: The Multidisciplinary Management of Spinal Metastasis

Presented by: Alexander Jones, MD and Oh-Hoon Kwon, MD

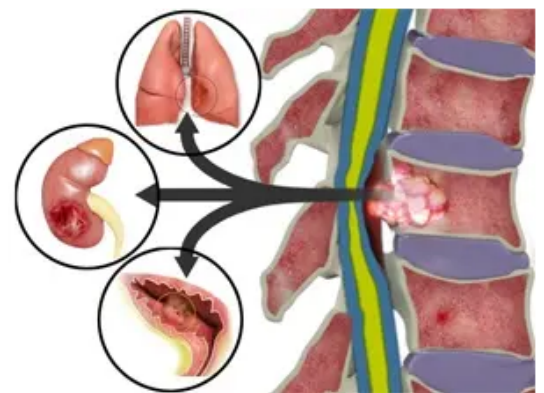


Overview

Spinal metastasis is a common and serious complication of systemic cancer, often presenting initially with nonspecific symptoms such as localized back pain. Timely recognition and coordinated multidisciplinary management are critical to preserving neurological function, reducing morbidity, and improving quality of life. Primary care providers (PCPs) and other frontline clinicians play a pivotal role in the early detection and referral of patients with suspected spinal metastatic disease. With Dr. Oh-Hoon Kwon and Dr. Alex Jones jointly presenting, this CME activity is designed to enhance the ability of PCPs and other non-specialist providers to identify early warning signs of spinal metastasis, initiate urgent referrals, and collaborate as part of the multidisciplinary team.

Objectives

1. Recognize early clinical signs and symptoms of spinal metastasis as well as the red-flag symptoms.
2. Identify the roles of the specialists in caring for the patient with spinal metastasis.
3. Understand the critical timing of diagnosis, testing, and treatment of patients with spinal metastasis.
4. Compare the treatment options for patients with spinal metastasis based on pathophysiology.



Friday, October 3, 2025
12:30PM - 1:30PM

Elmhurst Hospital,
Wildflower Room 3
WebEx option with registration

Registration required to claim
CME credits.
[Click here to register](#) or scan
QR code.



Endeavor Health: Edward-Elmhurst Hospitals is accredited by the Illinois State Medical Society (ISMS) to provide Continuing Medical Education to physicians. Endeavor Health: Edward-Elmhurst Hospitals designates this activity for a maximum of 1.0 *AMA PRA Category 1 Credit(s)*[™]. Physicians should claim only the credit commensurate with the extent of their participation in the activity.